



El Dorado County Fire Protection District



Station 25 Run Statistics May 2024

ENGINE 25: 284 Total Calls

- Medical Aid- 218
- Fire- 16
- Traffic Collision- 14
- Public Assist - 16
- Misc. – 18
- Move/Cover– 2

MEDIC 25: 296 Total Calls

- Medical Aid- 245
- Fire- 2
- Traffic Collision- 13
- Transfer -10
- Misc.- 0
- Move/Cover - 26



THANK YOU!

50TH ANNIVERSARY
EMS WEEK
May 19-25, 2024
HONORING OUR PAST.
FORGING OUR FUTURE.



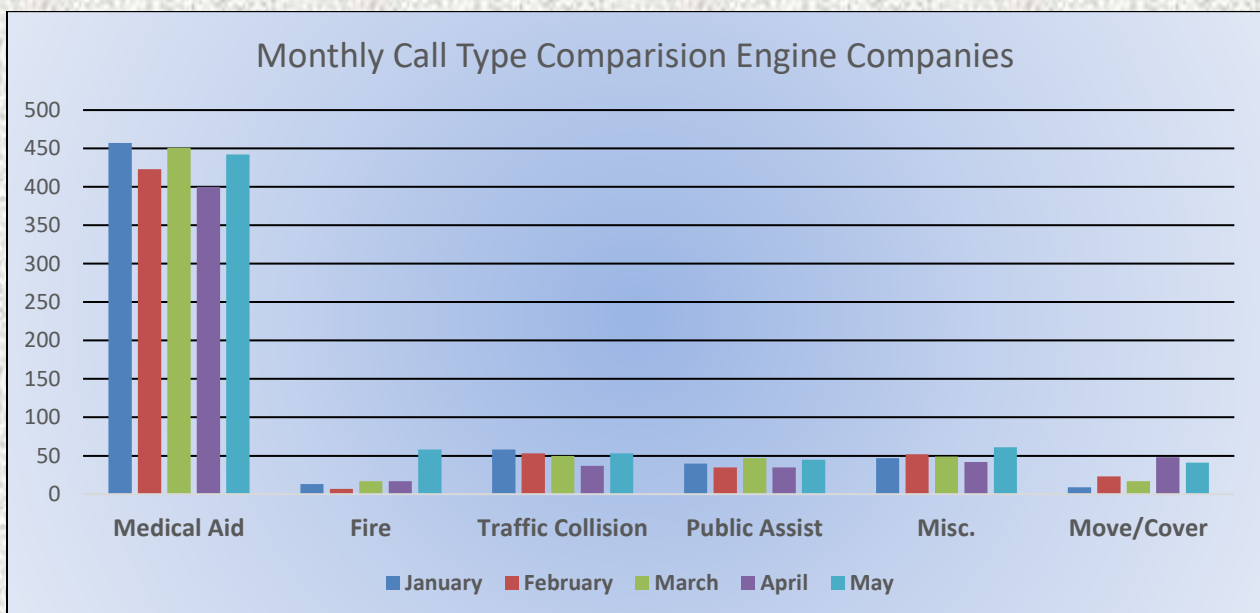
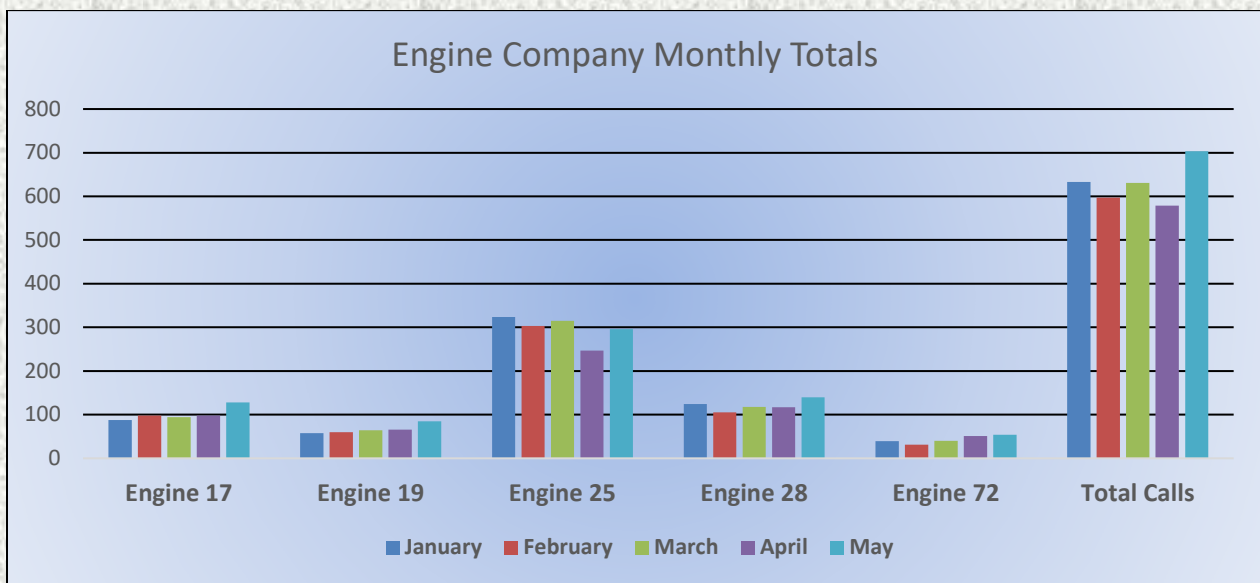


El Dorado County Fire Protection District



Monthly Run Statistics and Call Break Down May 2024 Engine Companies and Medic Units

Total Responses for Engine Companies: 703

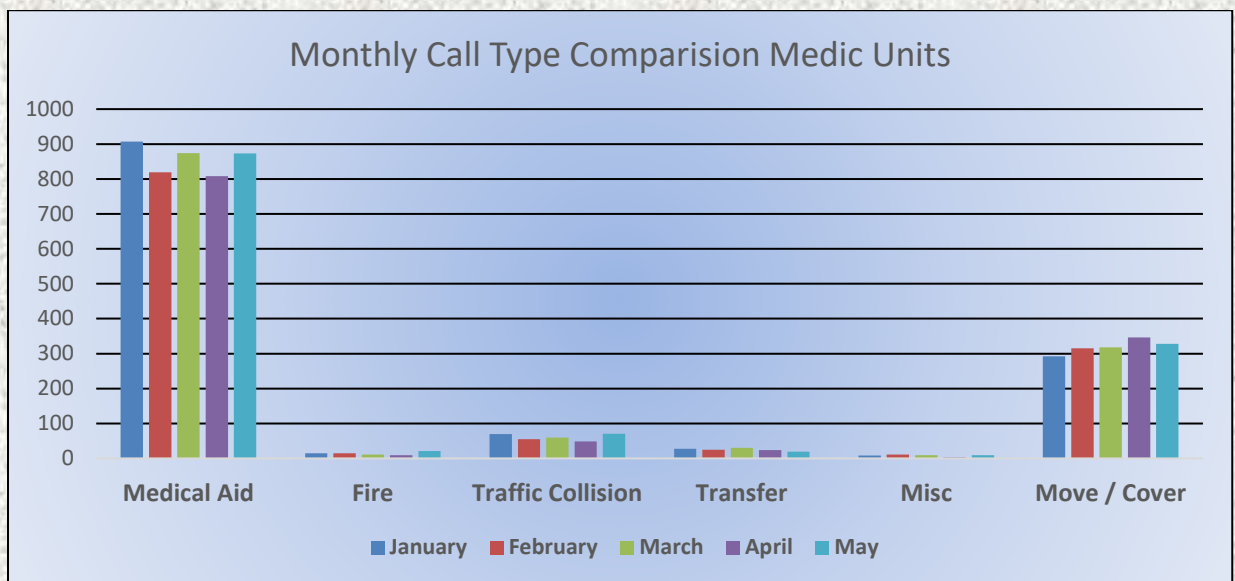
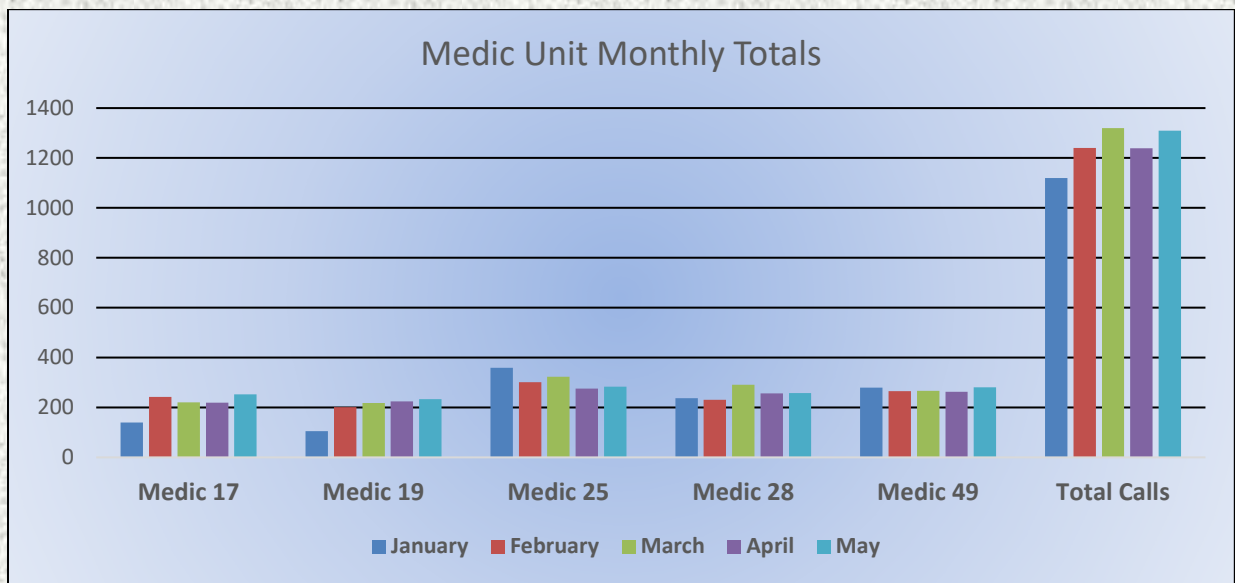




El Dorado County Fire Protection District

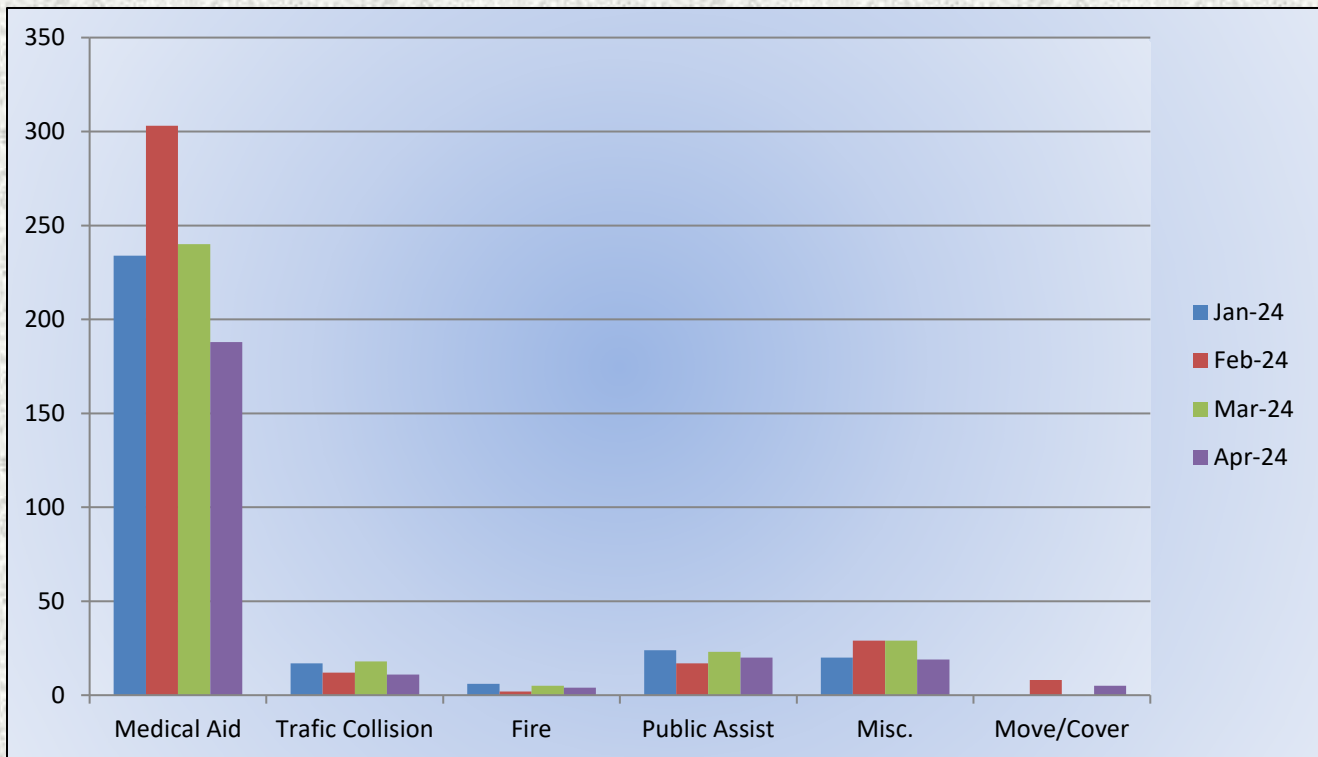
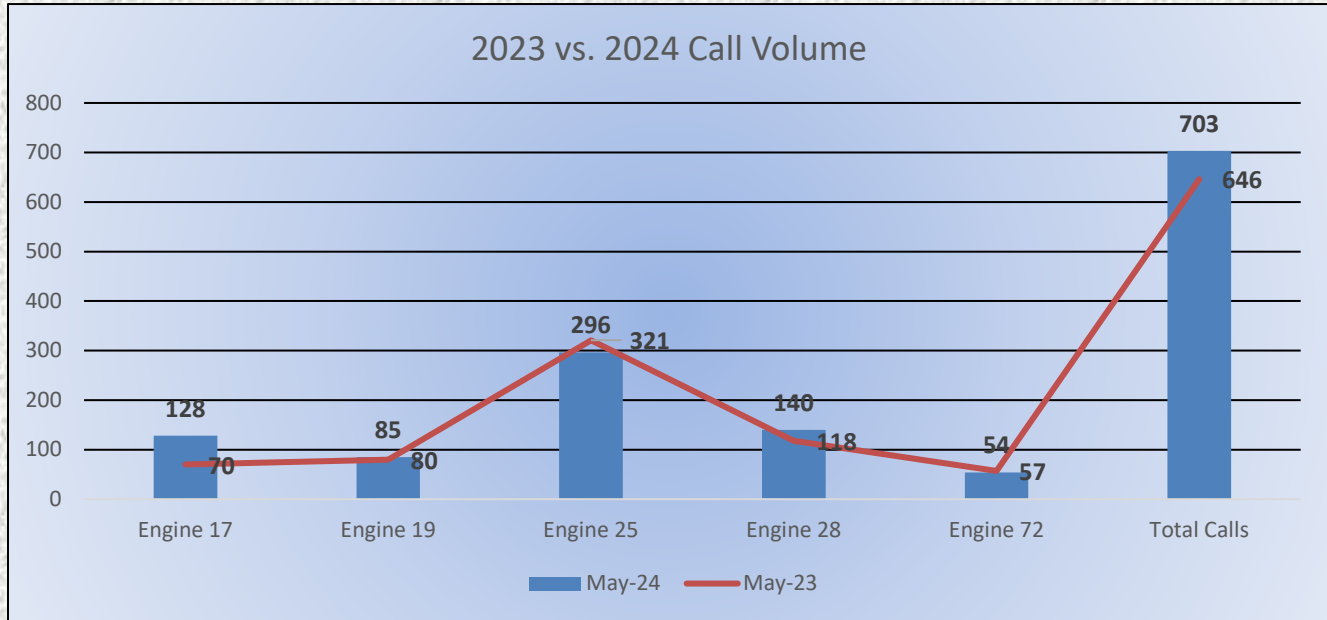


Total Responses for Medic Units: 1,309





Engine 25 Monthly Statistics Comparison





Medic 25



Monthly Statistics Comparison

